

# MARKETVIEW ARTS RENTAL GUIDE



**MARKETVIEW  
ARTS**  
YORK COLLEGE OF PENNSYLVANIA  
*Culture. Creativity. Community.*

Located in downtown York's historic Market District, Marketview Arts is the hub for culture and creativity for York College in the community. The main gallery space on the third floor provides the perfect backdrop for community gatherings or private events. The venue also offers a number of smaller spaces for more intimate events or meetings. The combination of historic charm and a chic, artsy ambiance makes Marketview Arts a unique and beautiful setting for any occasion.



## **BUILDING FEATURES**

- Furniture inventory:
  - 24 round banquet tables
  - Three 8-foot rectangular tables
  - Ten 5-foot rectangular tables
  - 150 banquet chairs
  - 50 standard chairs
- Equipment available for rent:
  - Handheld mic and speakers
  - Projector and screen
  - TV cart
  - Lectern with mic
- Third-floor staging kitchen for catering
- ADA-accessible restrooms
- Elevator
- Coat racks
- Wi-Fi
- Limited onsite parking for clients/vendors (permit required)

# GALLERY HALL

\$700 weekday

\$900 evening or weekend



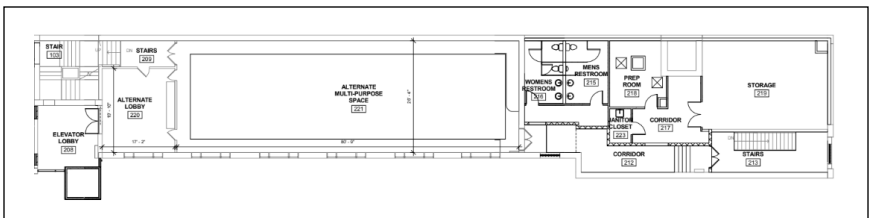
## CAPACITY

Standing: 150

Audience (rows of chairs): 120

Banquet Seating: 112 (96 recommended with dance floor)

Gallery Hall is a 2,000-square-foot art gallery where exhibitions are displayed throughout the year. Past exhibitions have featured work by popular local artists as well as work by nationally and internationally renowned artists. Unique architectural features include a wall of historic stained-glass windows and decorative ceiling domes.



## ANTEROOM

\$300 weekday / \$500 evening or weekend  
\$100 as an add-on to Gallery Hall



### CAPACITY

30 standing

10-14 conference

### EQUIPMENT

Large LCD screen TV (included in room rental fee)

This flexible space can be used in combination with Gallery Hall for check-in or food/beverage service, or on its own as a meeting room. It is equipped with a large screen perfect for displaying photo slideshows or digital presentations.



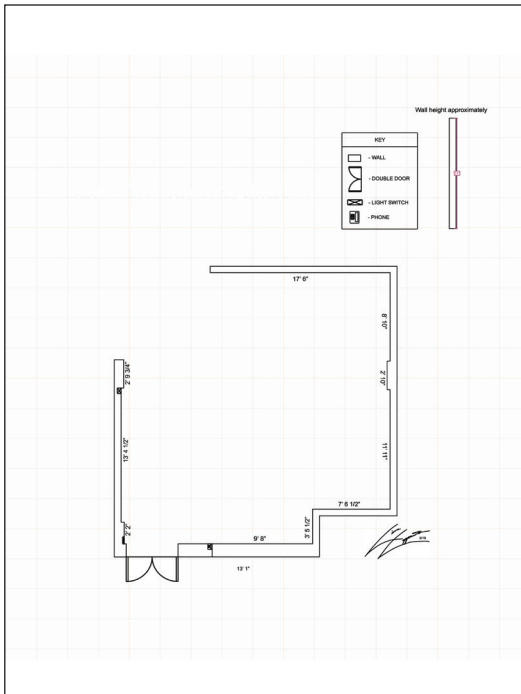
# CLASSROOM LAB

\$400 weekday / \$600 evening or weekend



CAPACITY  
30-35 seated

This multipurpose space adjacent to the student art studios can be used for classes, workshops, small presentations, and more.



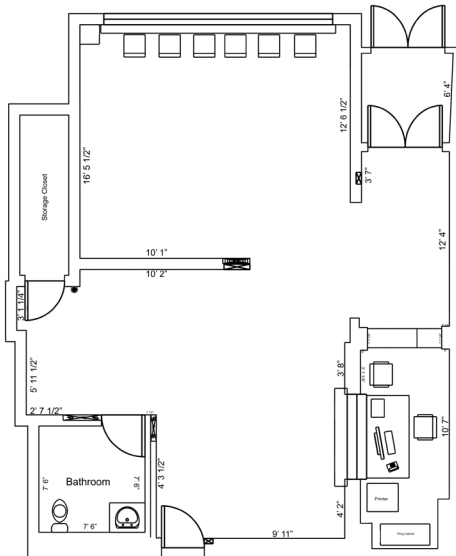
# THE SHOP

\$400 weekday / \$600 evening or weekend



CAPACITY  
30 standing

The Shop at Marketview Arts is used as retail space during visiting hours but can be rented during off-hours for small gathering or receptions.



## RENTAL FEES

Fees include:

- Access to the event space(s) for up to 8 hours in one day
- In-house furniture and coat racks (including setup and breakdown)
- Wi-Fi
- Access to staging kitchen
- Access to onsite parking lot for clients and vendors

Nonprofit organizations are eligible for a 50% discount on facility fees. Time past the 8 included hours may be requested for an additional fee.

## LIABILITY INSURANCE

Rental clients are required to provide a certificate of liability insurance at least 30 days prior to the event. Limits of coverage must be a minimum of \$1 million per occurrence and \$3 million aggregate (higher limits required for events where alcohol will be served).

## PAYMENT

A deposit equal to 50% of all facility rental fees is due at the time of contract signing in order to confirm the reservation. The balance is due by the date of the event.







Request Event Space



717-815-1909  
37 West Philadelphia Street, York, PA 17401  
[marketviewarts@ycp.edu](mailto:marketviewarts@ycp.edu)  
[marketviewarts.ycp.edu](http://marketviewarts.ycp.edu)